

SILWET* 641

Description

Silwet 641 concentrate is a synergistic combination of nonionic and organosilicone surfactants allowing formulators to develop a potentially cost-effective adjuvant mix using methyl soyate, which has been shown to not have the environmental impact of many other surfactants. Developed to provide superior spreading on most foliar surfaces, this property and the fast penetration through the cuticular layer, delivered by the methyl soyate, are well matched for the creation of a unique product for a very effective spray application of pesticide treatments. This optimized concentrate offers additional typical advantages to growers. Organosilicone surfactants are well known for requiring much lower water use in pesticide spray applications than conventional surfactants since they provide better foliar spreading and rainfastness. In addition, the dual action of methyl soyate and Silwet 641 concentrate can enable lower adjuvant use rates than conventional spray adjuvants.

This optimized concentrate offers additional advantages to growers. Organosilicones surfactants are well known for requiring much lower water rates in pesticides spray applications, than conventional surfactants, since they provide better foliar spreading and rainfastness. In addition, the dual action of methyl soyate and Silwet 641 enables lower adjuvant use rates than conventional spray adjuvants.

Key Features and Benefits

- enhanced spreading
- low dynamic surface tension for enhanced foliar contact
- formulated without NPE

- easy to disperse
- the components in Silwet 641 concentrate meet the requirements of the U.S. EPA regulation 40 CFR 180.910, and are therefore exempt from tolerances in food when used as an inert ingredient in agricultural applications in accordance with the other conditions of that regulation.

Typical Physical Properties

Property	Unit	Value
Appearance	-	Colorless, clear to slightly hazy liquid
Spread Diameter (0.25%)	mm	48
Viscosity at 25 °C	cPs	70
Aqueous pH (10%)	-	6.8
Cloud Point	°C	45

Typical data are average. Actual results may vary.

Typical data shall not be used as product specifications.

Potential Applications

Silwet 641 concentrate may be considered for use as a surfactant component in methylated seed oil based adjuvants. It can be added directly to such formulations to provide better spreading during spray applications. Typical formulation use levels range from 10% to 30% depending on the spreading/uptaking properties desired.

Silwet 641 concentrate should not be used with mineral oil or standard vegetable oil.

Table 1: Typical Guide Formulations for Silwet 641 concentrate

Ingredients	MSO Spreader formulation [weight%]	MSO Spreader formulation [weight%]	Notes
Silwet 641 concentrate	10.0	20.0	Spreader-penetrant
Methylated Seed Oil	90.0	80.0	Penetrant
<p><u>Procedure</u> Charge Silwet 641 concentrate and Methylated Seed Oil. Mix well until fully homogeneous</p>			

Table 2: Typical Recommended Dosages for Silwet 641 Concentrate/MSO Formulations

Formulation	Dosage [weight%]	Volume L/ha	Notes
Silwet 641 concentrate/MSO 10/90	0.50-1.00	100-200	Hard to wet crops/weeds ¹
	0.50-1.00	100-300	Easy to wet crops/weeds ²
Silwet 641 concentrate/MSO 20/80	0.50	100-200	Hard to wet crops/weeds
	0.25	100-300	Easy to wet crops/weeds
Silwet 641 concentrate/MSO 30/70	0.25-0.50	100-200	Hard to wet crops/weeds
	0.25	200-300	Easy to wet crops/weeds

Formulation	Dosage [L/ha]	Volume	Notes
Silwet 641 concentrate/MSO 10/90	0.5-2.0	100-200	Hard to wet crops/weeds ¹
	0.5-3.0	100-300	Easy to wet crops/weeds ²
Silwet 641 concentrate/MSO 20/80	0.5-1.0	100-200	Hard to wet crops/weeds
	0.25-0.75	100-300	Easy to wet crops/weeds
Silwet 641 concentrate/MSO 30/70	0.25-1.0	100-200	Hard to wet crops/weeds
	0.5	200-300	Easy to wet crops/weeds

¹ e.g. Canola, most grasses, cereals

² e.g. Apple, Soy, Variegated thistle

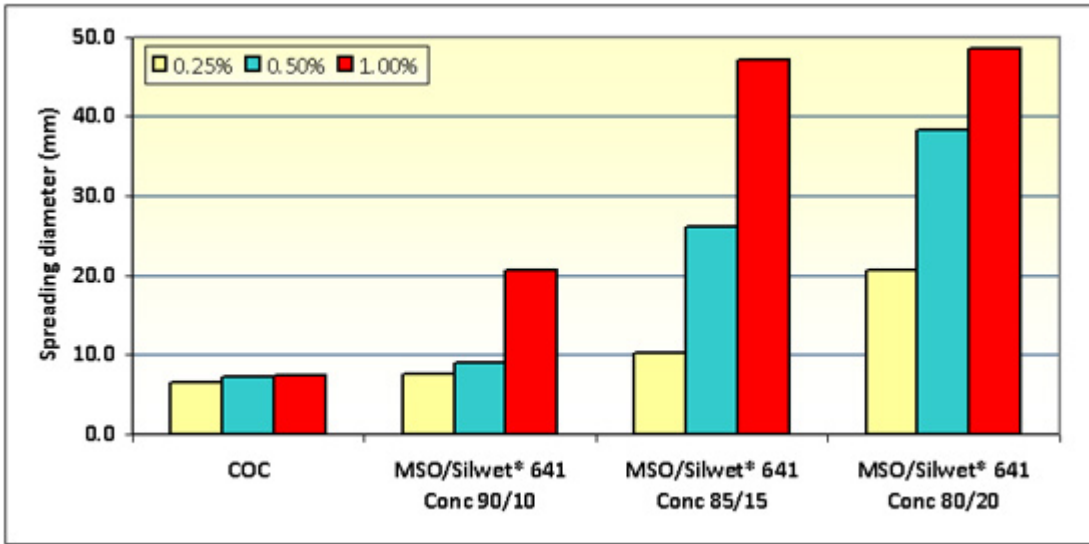


Figure 1: Spreading diameter of formulations comprising 10 to 20% of Silwet 641 Concentrate and 80 to 90%MSO

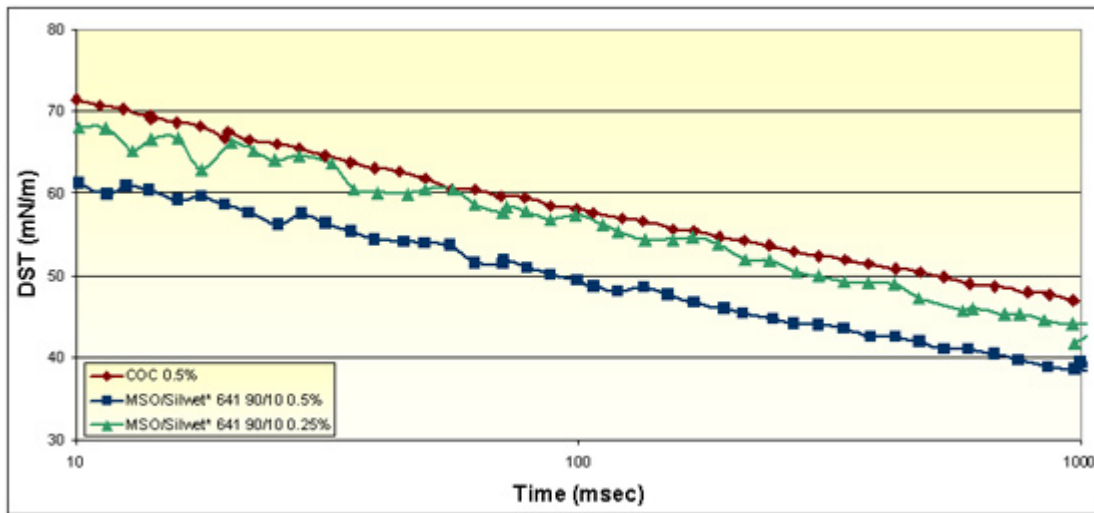


Figure 2: Dynamic Surface Tension (DST) of 10% Silwet 641 Concentrate/90% MSO Formulation

Typical data are average. Actual results may vary.
 Typical data shall not be used as product specifications.

Product formulations are included as illustrative examples only. Momentive makes no representation or warranty of any kind with respect to any such formulations, including,

without limitation, concerning the efficacy or safety of any product manufactured using such formulations.

Patent Status

Standard copy to come

Product Safety, Handling and Storage

Standard copy to come

Limitations

Standard copy to come

Contact Information

For product prices, availability, or order placement, contact our customer service at Momentive.com/CustomerService/

For literature and technical assistance, visit our website at: www.momentive.com

DISCLAIMER:

THE MATERIALS, PRODUCTS AND SERVICES OF MOMENTIVE PERFORMANCE MATERIALS INC. AND ITS SUBSIDIARIES AND AFFILIATES (COLLECTIVELY “SUPPLIER”), ARE SOLD SUBJECT TO SUPPLIER’S STANDARD CONDITIONS OF SALE, WHICH ARE INCLUDED IN THE APPLICABLE DISTRIBUTOR OR OTHER SALES AGREEMENT, PRINTED ON THE BACK OF ORDER ACKNOWLEDGMENTS AND INVOICES, AND AVAILABLE UPON REQUEST. ALTHOUGH ANY INFORMATION, RECOMMENDATIONS, OR ADVICE CONTAINED HEREIN IS GIVEN IN GOOD FAITH, SUPPLIER MAKES NO WARRANTY OR GUARANTEE, EXPRESS OR IMPLIED, (i) THAT THE RESULTS DESCRIBED HEREIN WILL BE OBTAINED UNDER END-USE CONDITIONS, OR (ii) AS TO THE EFFECTIVENESS OR SAFETY OF ANY DESIGN INCORPORATING ITS PRODUCTS, MATERIALS, SERVICES, RECOMMENDATIONS OR ADVICE. EXCEPT AS PROVIDED IN SUPPLIER’S STANDARD CONDITIONS OF SALE, SUPPLIER AND ITS REPRESENTATIVES SHALL IN NO EVENT BE RESPONSIBLE

FOR ANY LOSS RESULTING FROM ANY USE OF ITS MATERIALS, PRODUCTS OR SERVICES DESCRIBED HEREIN. Each user bears full responsibility for making its own determination as to the suitability of Supplier's materials, services, recommendations, or advice for its own particular use. Each user must identify and perform all tests and analyses necessary to assure that its finished parts incorporating Supplier's products, materials, or services will be safe and suitable for use under end-use conditions. Nothing in this or any other document, nor any oral recommendation or advice, shall be deemed to alter, vary, supersede, or waive any provision of Supplier's standard Conditions of Sale or this Disclaimer, unless any such modification is specifically agreed to in a writing signed by Supplier. No statement contained herein concerning a possible or suggested use of any material, product, service or design is intended, or should be construed, to grant any license under any patent or other intellectual property right of Supplier covering such use or design, or as a recommendation for the use of such material, product, service or design in the infringement of any patent or other intellectual property right.

*Silwet is a trademark of Momentive Performance Materials Inc.

Momentive and the Momentive logo are trademarks of Momentive Performance Materials Inc.