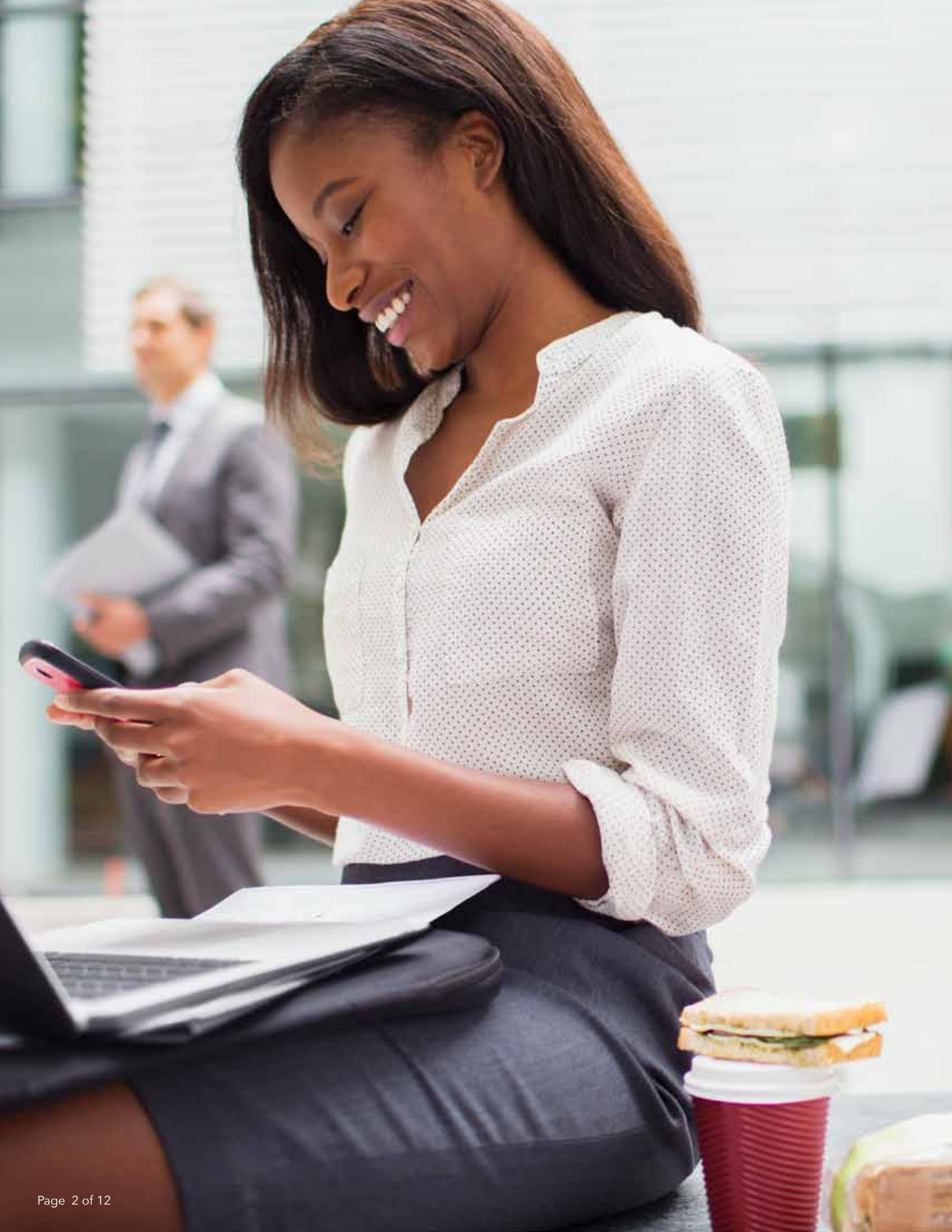


NORTH AMERICA

SKIN CARE AND
COLOR COSMETICS
SELECTION GUIDE





Making the World Look and Feel More Beautiful

In creams and lotions, we can put the “wow” right there on your fingertips. Imagine silicone products that can deliver instant anti-aging effects, new textures, and aesthetics as well as improved moisturization and hydration, greater oil adsorption, less transfer, and long-lasting wear with comfort. Our multifunctional silicone gels, microspheres, and boron nitride powders make it easy to create luxurious textures in any formulation.

Category	Description	Product Name	INCI Name
FILM FORMERS			
	Fluoro MT resin[†]	SilForm* FR-5 fluid SilForm FR-10 fluid	Trifluoropropyldimethylsiloxy/ Trimethylsiloxy Silsesquioxane (and) Dimethicone
	Ionic	SilForm INX fluid	Bis-Carboxydecyl Dimethicone
	MQ resin^{††}	SR1000	Trimethylsiloxysilicate
		SS4230	Cyclopentasiloxane (and) Trimethylsiloxysilicate
		SS4267	Dimethicone (and) Trimethylsiloxysilicate
		Silsoft* 74 fluid	Trimethylsiloxysilicate (and) Isododecane
	MT resin	SilForm Flexible fluid	Polymethylsilsesquioxane (and) Cyclopentasiloxane
		SilForm Flexible resin	Polymethylsilsesquioxane
	Water base	SilForm HyFlex emulsion	Bis-Ethylhydroxycyclohexyl Methacrylate/Butyl Acrylate Crosspolymer
TEXTURIZING STRUCTURANT			
	Texturizing structurant	Silsoft EAU microgel	Polysilicone-34 (and) Isononyl Isononanoate (and) Water
PIGMENT DISPERSING AIDES			
	Silicone alkyl copolymer	Silsoft 034 fluid	Caprylyl Methicone (and) C30-45 Alkyl Cetearyl Dimethicone Crosspolymer
		Silsoft ETS fluid	Ethyl Trisiloxane

[†] MT resins are film formers that mimic the movement of skin for comfort and a non-tightening feel.

^{††} MQ resins are more rigid film formers with excellent color-transfer resistance.

*SilForm and Silsoft are trademarks of Momentive Performance Materials Inc.

Key Benefits	Typical Benefits													Potential Product Categories															
	Adhesion	Detackifier	Dispersion/Spreading of Actives and Pigments	Emulsification	Enhanced Spreading	Film Forming	Moisturization	Oil Adsorption	Oil/Water Resistant	Organic Compatibility	SPF Enhancing	Sensory Enhancement	Shine/Gloss Additive	Soft Focus/Line Blurring	Thickens Oil/Silicone Phase	Volatile/Contains Volatiles	Antipersperant/Deodorant	BB Cream	Body/Face Skin Oil	Body Lotion/Cream	Cleansers/In-Shower Moisturizer	Facial Products	Foundation/Concealer	Hydroalcoholic Products	Lipstick/Lip Gloss	Loose and/or Pressed Powder	Mascara	Sunscreen Cream/Lotion	
<ul style="list-style-type: none"> • Comfortable wear • Oil and water resistance 			•		•	•	•		•	•	•							•		•			•	•		•	•	•	•
<ul style="list-style-type: none"> • Comfortable wear • Oil and water resistance 						•	•		•	•			•					•					•		•	•	•	•	
<ul style="list-style-type: none"> • Water resistance 	•					•			•		•							•		•			•	•		•	•	•	
<ul style="list-style-type: none"> • Water resistance 	•					•			•		•					•		•		•			•	•		•	•	•	
<ul style="list-style-type: none"> • Water resistance 	•					•			•		•							•		•			•	•		•	•	•	
<ul style="list-style-type: none"> • Water resistance 	•					•			•		•					•		•		•			•	•		•	•	•	
<ul style="list-style-type: none"> • Comfortable wear • Oil and water resistance 	•					•			•		•					•		•					•		•	•			
<ul style="list-style-type: none"> • Comfortable wear • Oil and water resistance 	•					•			•		•							•					•		•	•			
<ul style="list-style-type: none"> • Comfortable film formation • Oil and water resistance 						•	•		•	•			•					•					•		•	•	•	•	
<ul style="list-style-type: none"> • Pigment disbursement • Light-weight skin feel • Wide texture range 		•	•	•	•						•							•		•			•	•		•		•	
<ul style="list-style-type: none"> • Enhanced spreading • Detackifier • Increased spreading of oil base • Enhanced skin feel 		•	•		•						•	•	•		•			•	•			•	•		•	•	•	•	
<ul style="list-style-type: none"> • Enhanced spreading (volatile) • Dry, light skin feel 	•	•		•					•		•					•		•	•			•	•	•	•	•	•	•	

Category	Description	Product Name	INCI Name
----------	-------------	--------------	-----------

SENSORY ENHANCERS

	Boron nitrides	Momentive Softouch* CC 6058 boron nitride	Boron Nitride
		Momentive Softouch CC 6059 boron nitride	Boron Nitride
		Momentive Softouch CC 6097 boron nitride	Boron Nitride
		Momentive Softouch CCS 102 boron nitride	Boron Nitride
		Momentive Softouch CCS 402 boron nitride	Boron Nitride
	Silicone gels	Velvesil* crosspolymers	
		Velvesil 034 gel	Caprylyl Methicone (and) C30-45 Alkyl Cetearyl Dimethicone Crosspolymer
		Velvesil 125 gel	Cyclopentasiloxane (and) C30-45 Alkyl Cetearyl Dimethicone Crosspolymer
		Velvesil DM gel	Dimethicone (and) Cetearyl Dimethicone Crosspolymer
		Velvesil Mul-T gel	Caprylyl Methicone (and) Boron Nitride (and) C30-45 Alkyl Cetearyl Dimethicone Crosspolymer

*Momentive Softouch and Velvesil are trademarks of Momentive Performance Materials Inc.

Key Benefits	Typical Benefits														Potential Product Categories													
	Adhesion	Detackifier	Dispersion/Spreading of Actives and Pigments	Emulsification	Enhanced Spreading	Film Forming	Moisturization	Oil Adsorption	Oil/Water Resistant	Organic Compatibility	SPF Enhancing	Sensory Enhancement	Shine/Gloss Additive	Soft Focus/Line Blurring	Thickens Oil/Silicone Phase	Volatile/Contains Volatiles	Antipersperant/Deodorant	BB Cream	Body/Face Skin Oil	Body Lotion/Cream	Cleansers/In-Shower Moisturizer	Facial Products	Foundation/Concealer	Hydroalcoholic Products	Lipstick/Lip Gloss	Loose and/or Pressed Powder	Mascara	Sunscreen Cream/Lotion
<ul style="list-style-type: none"> • 11 microns; quasi-graphitic • Soft focus • Lubricious feel • Excellent coverage and wrinkle hiding • Radiance effect 	•	•									•		•				•		•			•	•		•	•		•
<ul style="list-style-type: none"> • 6 microns; quasi-graphitic • Soft focus • Better light transmission • Semi-matte • Natural look 	•	•					•				•		•				•					•	•			•		
<ul style="list-style-type: none"> • 5 microns; quasi-graphitic • Soft focus, line blurring and wrinkle hiding • Matte-effect 	•	•									•		•				•					•	•			•		•
<ul style="list-style-type: none"> • 15 microns; quasi-graphitic • Pearlescent effect 	•	•					•				•						•		•			•	•		•	•		
<ul style="list-style-type: none"> • 47 microns; quasi-graphitic • Lubricious feel • Sparkle effect 	•	•									•						•		•			•	•		•	•		•
<ul style="list-style-type: none"> • Enhanced spreading • Detackifer • Good skin affinity • Good compatibility with ester oils and natural oils 		•	•		•						•	•	•				•		•			•	•		•	•	•	•
<ul style="list-style-type: none"> • Line blurring • Matte finish • Good skin affinity • Thickening efficiency • Good compatibility with ester oils and natural oils 		•								•	•		•	•	•	•	•		•			•	•		•	•		•
<ul style="list-style-type: none"> • Moisturization • Good skin affinity • Good compatibility with ester oils and natural oils 		•	•			•				•	•		•	•			•		•	•		•	•		•	•		•
<ul style="list-style-type: none"> • Soft focus • Luxurious skin feel • Enhanced natural appearance • Good skin affinity • Good compatibility with ester oils and natural oils 	•	•	•		•		•			•	•		•	•			•		•			•	•			•		•

Category	Description	Product Name	INCI Name	
SENSORY ENHANCERS (continued)				
		Traditional silicone elastomers		
		SFE 839 gel	Cyclopentasiloxane (and) Dimethicone/Vinyl Dimethicone Crosspolymer	
		Silsoft* Silicone gel	Cyclopentasiloxane (and) Cetearyl Dimethicone/ Vinyl Dimethicone Crosspolymer	
	Silicone microspheres		Tospearl* 1110A microspheres	Polymethylsilsesquioxane
		Tospearl 120A microspheres	Polymethylsilsesquioxane	
		Tospearl 145A microspheres	Polymethylsilsesquioxane	
		Tospearl 150KA microspheres	Polymethylsilsesquioxane	
		Tospearl 2000B microspheres	Polymethylsilsesquioxane	
		Tospearl 3000A microspheres	Polymethylsilsesquioxane	
	Water base		Silsoft E-Pearl PMF emulsion	Polymethylsilsesquioxane (and) Dimethicone (and) Isohexadecane (and) Cetearyl Methicone (and) PEG-40 Stearate (and) Steareth-2 (and) Steareth-21
		Velvesil* E-Gel PMF emulsion	Dimethicone/Vinyl Dimethicone Crosspolymer (and) Dimethicone (and) Isohexadecane (and) Cetearyl Methicone	

*Silsoft, Tospearl and Velvesil are trademarks of Momentive Performance Materials Inc.

Key Benefits	Typical Benefits														Potential Product Categories													
	Adhesion	Detackifier	Dispersion/Spreading of Actives and Pigments	Emulsification	Enhanced Spreading	Film Forming	Moisturization	Oil Adsorption	Oil/Water Resistant	Organic Compatibility	SPF Enhancing	Sensory Enhancement	Shine/Gloss Additive	Soft Focus/Line Blurring	Thickens Oil/Silicone Phase	Volatile/Contains Volatiles	Antipersperant/Deodorant	BB Cream	Body/Face Skin Oil	Body Lotion/Cream	Cleansers/In-Shower Moisturizer	Facial Products	Foundation/Concealer	Hydroalcoholic Products	Lipstick/Lip Gloss	Loose and/or Pressed Powder	Mascara	Sunscreen Cream/Lotion
<ul style="list-style-type: none"> Sensory enhancer 		•									•			•	•	•	•					•	•					•
<ul style="list-style-type: none"> Sensory enhancer 		•								•	•			•	•	•	•	•					•	•				•
<ul style="list-style-type: none"> 11 microns Enhanced softness Lubricious feel 										•	•						•	•				•	•				•	
<ul style="list-style-type: none"> 2 microns Soft focus Oil adsorption 							•		•		•		•				•	•				•	•				•	
<ul style="list-style-type: none"> 4.5 microns Balance between soft focus and enhanced skin feel 									•		•		•				•	•				•	•				•	
<ul style="list-style-type: none"> 3-dimensional spiky surface Excellent line blurring Natural silkiness 									•		•		•				•					•	•				•	
<ul style="list-style-type: none"> 4-6 microns Broader particle size Enhanced skin feel 									•		•		•				•	•				•	•				•	
<ul style="list-style-type: none"> 4-7 microns Broad particle size Best benefit/cost balance 									•		•		•				•	•				•	•				•	
<ul style="list-style-type: none"> Aqueous phase Effective for formulations with high water content Post-addition capable 		•				•			•		•		•				•	•	•	•	•	•					•	
<ul style="list-style-type: none"> Emolliency Cushioning feel 		•	•			•			•		•		•				•	•	•	•	•	•					•	

Category	Description	Product Name	INCI Name
SHINE ADDITIVES			
	Phenyl modified	SF 1550 fluid	Phenyl Trimethicone
		SF 1555 fluid	Bis-Phenylpropyl Dimethicone
		SilShine* 150 fluid	Diphenyl Dimethicone
		SilShine 151 fluid	Phenylpropyldimethylsiloxysilicate
SPREADING AGENTS AND EMULSIFIERS			
	Dimethiconol and cyclopentasiloxane blend	Silsoft* 1215 fluid	Cyclopentasiloxane (and) Dimethiconol
	Organomodified silane	Silsoft Spread MAX fluid	Methoxy PEG-8 Dimethylsilylethyl Trimethylsilane (and) Trideceth-5 (and) Merxapol 172
	Silicone polyether copolymers	SF 1528 fluid (10% copolymer)	Cyclopentasiloxane (and) PEG/PPG-20/15 Dimethicone
		SF 1540 fluid (40% copolymer)	Cyclopentasiloxane (and) PEG/PPG-20/15 Dimethicone
		SF 1540 LT fluid	Cyclopentasiloxane (and) PEG/PPG-20/15 Dimethicone
		Silsoft 876 fluid	PEG-12 Dimethicone
		Silsoft 895 fluid	PEG-17 Dimethicone

*Silshine and Silsoft are trademarks of Momentive Performance Materials Inc.

Key Benefits	Typical Benefits														Potential Product Categories													
	Adhesion	Detackifier	Dispersion/Spreading of Actives and Pigments	Emulsification	Enhanced Spreading	Film Forming	Moisturization	Oil Adsorption	Oil/Water Resistant	Organic Compatibility	SPF Enhancing	Sensory Enhancement	Shine/Gloss Additive	Soft Focus/Line Blurring	Thickens Oil/Silicone Phase	Volatile/Contains Volatiles	Antipersperant/Deodorant	BB Cream	Body/Face Skin Oil	Body Lotion/Cream	Cleansers/In-Shower Moisturizer	Facial Products	Foundation/Concealer	Hydroalcoholic Products	Lipstick/Lip Gloss	Loose and/or Pressed Powder	Mascara	Sunscreen Cream/Lotion
<ul style="list-style-type: none"> • Immediate shine • RI 1.45 - 1.47 		•								•		•					•	•					•		•	•	•	•
<ul style="list-style-type: none"> • Immediate shine (economical) • RI 1.46 - 1.48 		•			•					•		•					•	•		•			•		•	•	•	•
<ul style="list-style-type: none"> • Immediate shine • RI 1.50 		•								•		•					•	•		•			•		•	•	•	•
<ul style="list-style-type: none"> • Non-migrating • High shine • RI 1.51 					•					•	•	•					•	•		•			•		•	•	•	•
<ul style="list-style-type: none"> • Enhanced emolliency • Improved spreadability and rub-in 		•			•						•	•				•	•		•			•	•	•	•	•	•	•
<ul style="list-style-type: none"> • Emulsification and dispersion of actives • Estimated high HLB • Water soluble • Profoamer 			•	•		•													•	•	•	•					•	
<ul style="list-style-type: none"> • Emulsification and dispersion of actives • Estimated high HLB • Water soluble • Profoamer 				•													•											
<ul style="list-style-type: none"> • Emulsification and dispersion of actives • Estimated high HLB • Water soluble • Profoamer 				•													•											
<ul style="list-style-type: none"> • Emulsification and dispersion of actives • Estimated high HLB • Water soluble • Profoamer • Low tetramer level 				•													•											
<ul style="list-style-type: none"> • Emulsification and dispersion of actives • Estimated high HLB • Water soluble • Profoamer 			•	•															•	•	•	•					•	•
<ul style="list-style-type: none"> • Emulsification and dispersion of actives • Estimated high HLB • Water soluble • Profoamer 			•	•		•													•	•	•	•					•	

Customer Service Centers

Worldwide

Email: commercial.services@momentive.com

Americas

+1 800 295 2392
+1 614 986 2495

Europe, Middle East, Africa and India

00800 4321 1000
+40 213 044229

Latin America

+55 11 4534 9660

Asia Pacific

China
800 820 0202
+86 21 3860 4892

Japan

0120 975 400
+81 276 20 6182

All Other Countries

+60 3 9206 1543

Disclaimer

FORMULATIONS ARE ILLUSTRATIVE EXAMPLES AND DO NOT REPRESENT COMMERCIALIZED PRODUCTS. They have not been subjected to extensive testing and Momentive makes no representation or warranty of any kind with regard to any such formulations, including, without limitation, concerning the performance, efficacy or safety of any product manufactured using such formulations. EACH USER BEARS FULL RESPONSIBILITY FOR (1) MAKING ITS OWN DETERMINATION AS TO THE SUITABILITY AND LEGAL COMPLIANCE OF ANY FORMULATION, MATERIALS, RECOMMENDATIONS, OR ADVICE FOR ITS OWN PARTICULAR USE, (2) IDENTIFYING AND PERFORMING ALL TESTS AND ANALYSES NECESSARY TO A SURE THAT ITS FINISHED PRODUCTS BASED UPON EXAMPLE FORMULATIONS AND/OR INCORPORATING MENTIONED PRODUCTS, MATERIALS, OR SERVICES WILL BE SAFE AND SUITABLE FOR USE UNDER END-USE CONDITIONS, AND (3) OBTAINING ANY NECESSARY GOVERNMENT OR REGULATORY CLEARANCE, LICENSE OR REGISTRATION.

Any reference to a third party's materials is not an endorsement of those materials or an endorsement by the third party of Momentive materials. Momentive has not undertaken a comprehensive patent or other intellectual property search on the formulations. No statement contained herein concerning a possible or suggested use of any material, product, service or design is intended, or should be construed, to grant any license under any patent or other intellectual property right covering such use or design, or as a recommendation for the use of such material, product, service or design in the infringement of any patent or other intellectual property right.

BEFORE HANDLING ANY PRODUCTS MENTIONED, REVIEW THE LATEST SAFETY DATA SHEET (SDS) AND LABEL FOR PRODUCT SAFETY INFORMATION, SAFE HANDLING INSTRUCTIONS, PERSONAL PROTECTIVE EQUIPMENT IF NECESSARY, EMERGENCY SERVICE CONTACT INFORMATION, AND ANY SPECIAL STORAGE CONDITIONS REQUIRED FOR SAFETY. MOMENTIVE MAINTAINS AN AROUND-THE-CLOCK EMERGENCY SERVICE FOR ITS PRODUCTS. SDS FOR MOMENTIVE PRODUCTS ARE AVAILABLE AT WWW.MOMENTIVE.COM OR, UPON REQUEST, FROM ANY MOMENTIVE REPRESENTATIVE. USE OF OTHER MATERIALS IN CONJUNCTION WITH MOMENTIVE PRODUCTS MAY REQUIRE ADDITIONAL PRECAUTIONS. PLEASE REVIEW AND FOLLOW THE SAFETY INFORMATION PROVIDED BY THE MANUFACTURER OF SUCH OTHER MATERIALS.

THE MATERIALS, PRODUCTS AND SERVICES OF MOMENTIVE PERFORMANCE MATERIALS INC. AND ITS SUBSIDIARIES AND AFFILIATES (COLLECTIVELY "SUPPLIER"), ARE SOLD SUBJECT TO SUPPLIER'S STANDARD CONDITIONS OF SALE, WHICH ARE INCLUDED IN THE APPLICABLE DISTRIBUTOR OR OTHER SALES AGREEMENT, PRINTED ON THE BACK OF ORDER ACKNOWLEDGMENTS AND INVOICES, AND AVAILABLE UPON REQUEST. EXCEPT AS PROVIDED IN SUPPLIER'S STANDARD CONDITIONS OF SALE, SUPPLIER AND ITS REPRESENTATIVES SHALL IN NO EVENT BE RESPONSIBLE FOR ANY LOSS RESULTING FROM ANY USE OF ITS MATERIALS, PRODUCTS OR SERVICES DESCRIBED HEREIN. Nothing in this or any other document, nor any oral recommendation or advice, shall be deemed to alter, vary, supersede, or waive any provision of Supplier's standard Conditions of Sale or this Disclaimer, unless any such modification is specifically agreed to in a writing signed by Supplier.

*Silsoft, SilShine, SilForm, Momentive Softouch, Tospearl and Velvelil are trademarks of Momentive Performance Materials Inc.

Momentive and the Momentive logo are trademarks of Momentive Performance Materials Inc.