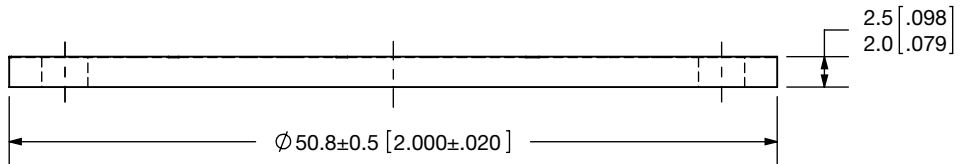


2x $\phi 3.05 \pm 0.2$ [.120±.008] thru
 $\square \phi 5.99 \pm 0.25$ [.236±.010]
 contact O.D.



Typical	
Resistance*	15 - 25 Ω
Voltage	110 volts
Current	12 amps
Power	1300 watts
*Resistance Room Temp: R@800°C ~ 1/2R Room Temp	

THE INFORMATION CONTAINED IN THIS DRAWING IS THE SOLE PROPERTY OF MOMENTIVE PERFORMANCE MATERIALS. ANY REPRODUCTION IN PART OR AS A WHOLE WITHOUT THE WRITTEN PERMISSION OF MOMENTIVE PERFORMANCE MATERIALS IS PROHIBITED.

Momentive and the Momentive logo are trademarks of Momentive Performance Materials Inc.

DIMENSIONS ARE IN: mm [in]
 TOLERANCES: UNLESS OTHERWISE SPECIFIED
 ANGULAR: MACH $\pm .5^\circ$
 TWO PLACE DECIMAL: $\pm .3$ [0.01]
 THREE PLACE DECIMAL: $\pm .13$ [0.005]

	NAME	DATE
DRAWN BY:	JMM	4/8/08
ENGINEER:	TJH	
APPROVED BY:	TJH	4/16/08
CNC:		
ITEM #:	HTR0062	
CMM#		
WORK ORDER:	SALES ORDER:	



TITLE:
HT-62 Standard Heater Final
****External Details****

EXPORT CONTROL STATUS:
IS THIS DOCUMENT EXPORT CONTROLLED? **No**

MATERIAL:
 PBN/PG
 TREATMENT:
 FORMER UCAR/ACC #:
 HTRST19, HTR0683
 CUST DWG #:

RFQ #:

DRAWING NUMBER:
080401

REV
 -

TITLEBLOCK VERSION:
 MOMENTIVE TITLEBLOCK A INCH V1.0 4/07

SCALE: 2:1

SHEET 1 OF 1