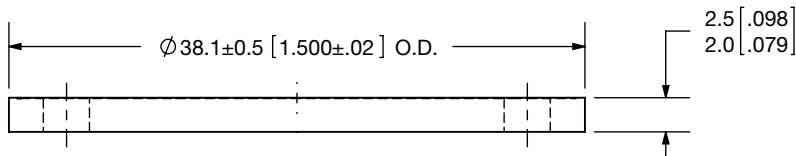
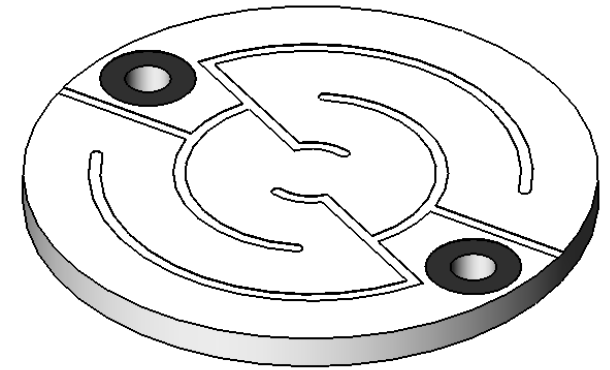


2x $\phi 3.05 \pm 0.2$ [.120±.008] thru contact I.D.
 $\square \phi 6.35 \pm 0.25$ [.250±.010] contact O.D.



Typical	
Resistance*	10 - 16 Ω
Voltage	70 volts
Current	10 amps
Power	700 watts
*Resistance Room Temp: R@800°C ~ 1/2R Room Temp	

THE INFORMATION CONTAINED IN THIS DRAWING IS THE SOLE PROPERTY OF MOMENTIVE PERFORMANCE MATERIALS. ANY REPRODUCTION IN PART OR AS A WHOLE WITHOUT THE WRITTEN PERMISSION OF MOMENTIVE PERFORMANCE MATERIALS IS PROHIBITED.

Momentive and the Momentive logo are trademarks of Momentive Performance Materials Inc.

DIMENSIONS ARE IN: mm[in]

TOLERANCES: UNLESS OTHERWISE SPECIFIED
 ANGULAR: MACH $\pm .5^\circ$
 TWO PLACE DECIMAL: $\pm .3$ [0.01]
 THREE PLACE DECIMAL: $\pm .13$ [0.005]

NAME DATE

DRAWN BY: JMM 4/2/08
 ENGINEER: TJH
 APPROVED BY: TJH 4/16/08



TITLE:
 HT-42 Standard Heater Final
 External Details

EXPORT CONTROL STATUS:

IS THIS DOCUMENT EXPORT CONTROLLED? **No**

MATERIAL:
 PBN/PG
 TREATMENT:

FORMER UCAR/ACC #:
 HTRSK22, HTR_0659

CUST DWG #:

CNC:

ITEM #:
 HTR0042

CMM#

WORK ORDER: SALES ORDER:

DRAWING NUMBER:
 080377

REV
 -

TITLEBLOCK VERSION:

MOMENTIVE TITLEBLOCK A INCH V1.0 4/07

SCALE: 2:1

SHEET 1 OF 1