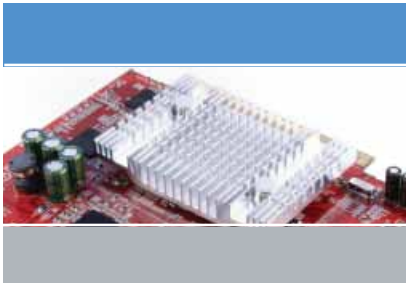


CoolFX* Hybrid Fillers

QUARTZ & CERAMICS - BORON NITRIDE POWDERS



Momentive's **CoolFX** Hybrid Fillers are a new generation of materials developed to provide step-change improvements in cost and performance for thermal management applications. The portfolio is broad to enable use in a wide range of advanced material applications.

Potential Applications

CoolFX Hybrid Filler grades can be considered for use to enhance thermal conductivity while providing electrical isolation in thermoplastics. Potential end-use applications include:

- LED lighting fixtures
- Consumer electronic devices
- Aerospace, automotive cooling systems
- Motor and battery housings
- Temperature sensors
- Heat exchangers

Key Features and Typical Benefits

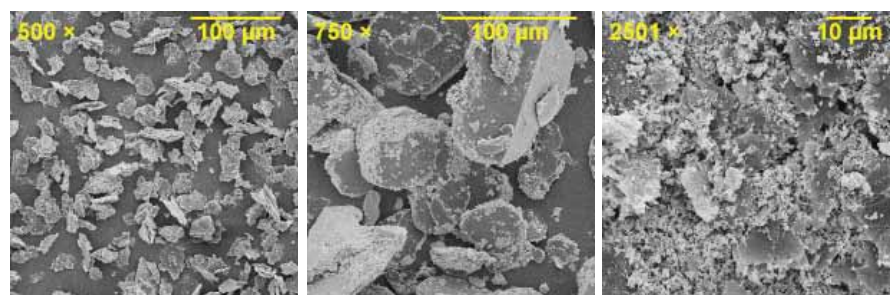
- Electrically insulating
- Better physical properties
- More consistent feeding
- Easier extrusion
- White formulations possible
- Potentially lower total cost

Typical Physical Properties⁽¹⁾

Product Grade	For Use in Thermoplastic Resins	Filler Loading Range (wt%)	Thermal Conductivity Range (W/mK)	Bulk Density (g/cc)
CFX-1020	PA	43-57%	3-5	0.65
CFX-1026	PP	43-57%	3-5	0.65
CFX-1035	PC	43-57%	3-5	0.63
CFX-1036	PPS	43-57%	3-5	0.63
CFX-1022	All	61-72%	3-5	0.80
CFX-1021	All	60-73%	7-10	0.92

⁽¹⁾ Typical properties are average data and are not to be used as or to develop specifications.

Scanning Electron Microscope Images of CoolFX Hybrid Fillers



Customer Service Centers

North America

cs-na.ceramics@momentive.com

T +1 440 878 5700
F +1 440 878 5928

Europe

cs-eur.ceramics@momentive.com

T +49 4152 9380
F +49 4152 938 136

Pacific

cs-asia.ceramics@momentive.com

T +81 3 5114 3769
F +81 3 5114 3777

PATENT STATUS: Nothing contained herein shall be construed to imply the nonexistence of any relevant patents or to constitute the permission, inducement or recommendation to practice any invention covered by any patent, without authority from the owner of the patent.

PRODUCT SAFETY, HANDLING AND STORAGE: Customers should review the latest Material Safety Data Sheet (MSDS) and label for product safety information, safe handling instructions, personal protective equipment if necessary, and any special storage conditions required for safety. MSDS are available at www.momentive.com or, upon request, from any Momentive Performance Materials (MPM) representative. For product storage and handling procedures to maintain the product quality within our stated specifications, please review Certificates of Analysis, which are available in the Order Center. Use of other materials in conjunction with MPM products (for example, primers) may require additional precautions. Please review and follow the safety information provided by the manufacturer of such other materials.

LIMITATIONS: Customers must evaluate Momentive Performance Materials products and make their own determination as to fitness of use in their particular applications.

DISCLAIMER:

THE MATERIALS, PRODUCTS AND SERVICES OF MOMENTIVE PERFORMANCE MATERIALS INC. AND ITS SUBSIDIARIES AND AFFILIATES (COLLECTIVELY "SUPPLIER"), ARE SOLD SUBJECT TO SUPPLIER'S STANDARD CONDITIONS OF SALE, WHICH ARE INCLUDED IN THE APPLICABLE DISTRIBUTOR OR OTHER SALES AGREEMENT, PRINTED ON THE BACK OF ORDER ACKNOWLEDGMENTS AND INVOICES, AND AVAILABLE UPON REQUEST. ALTHOUGH ANY INFORMATION, RECOMMENDATIONS, OR ADVICE CONTAINED HEREIN IS GIVEN IN GOOD FAITH, SUPPLIER MAKES NO WARRANTY OR GUARANTEE, EXPRESS OR IMPLIED, (i) THAT THE RESULTS DESCRIBED HEREIN WILL BE OBTAINED UNDER END-USE CONDITIONS, OR (ii) AS TO THE EFFECTIVENESS OR SAFETY OF ANY DESIGN INCORPORATING ITS PRODUCTS, MATERIALS, SERVICES, RECOMMENDATIONS OR ADVICE. EXCEPT AS PROVIDED IN SUPPLIER'S STANDARD CONDITIONS OF SALE, SUPPLIER AND ITS REPRESENTATIVES SHALL IN NO EVENT BE RESPONSIBLE FOR ANY LOSS RESULTING FROM ANY USE OF ITS MATERIALS, PRODUCTS OR SERVICES DESCRIBED HEREIN. Each user bears full responsibility for making its own determination as to the suitability of Supplier's materials, services, recommendations, or advice for its own particular use. Each user must identify and perform all tests and analyses necessary to assure that its finished parts incorporating Supplier's products, materials, or services will be safe and suitable for use under end-use conditions. Nothing in this or any other document, nor any oral recommendation or advice, shall be deemed to alter, vary, supersede, or waive any provision of Supplier's standard Conditions of Sale or this Disclaimer, unless any such modification is specifically agreed to in a writing signed by Supplier. No statement contained herein concerning a possible or suggested use of any material, product, service or design is intended, or should be construed, to grant any license under any patent or other intellectual property right of Supplier covering such use or design, or as a recommendation for the use of such material, product, service or design in the infringement of any patent or other intellectual property right.

Momentive and the Momentive logo are trademarks of Momentive Performance Materials Inc.



260 Hudson River Road
Waterford, NY 12188 USA
momentive.com