



# Boron Nitride Powder

AC6004 and AC6069

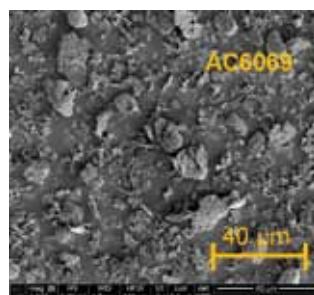
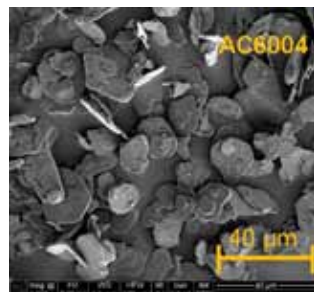
Momentive Performance Materials produces over 70 standard and custom grades of BN powders to meet a wide range of application requirements, and has over 50 years of expertise in the synthesis and refinement of boron nitride powders.

## Potential Applications

These grades may be considered for use in a broad range of demanding applications, including release agents for high temperature metal and glass processing. Additionally, these grades may be considered for use as additives in solid lubrication applications, and as base materials for hot-pressed solids and composites and refractory coatings.

## Key Features & Typical Benefits

- Thermal Conductor
- Electrical Insulator
- Low Dielectric Constant/Loss
- High Temperature Stability
- Lubricious
- Inert and Chemically Stable
- Non-Wetting



Typical Physical Properties <sup>1</sup>	AC6004	AC6069
Crystal (Type)	Hexagonal (Graphitic)	Hexagonal (Graphitic)
Color	White	White
Mean Particle Size µm	12-13	9
Crystal Size µm	>10	6
Surface Area m <sup>2</sup> /g	2	8
Tap Density g/cm <sup>3</sup>	0.45	0.25
Oxygen %	0.3	0.4
Soluble Borates %	0.15	0.2
Carbon %	0.02	0.1

Momentive Performance Materials' boron nitride (BN) powders grades AC6004 and AC6069 are generally single-crystal hexagonal platelets with very high purity. The mean particle sizes for these ultra-fine powders are in the range of 6 to 13 µm, and they are >99.9% -325 mesh.

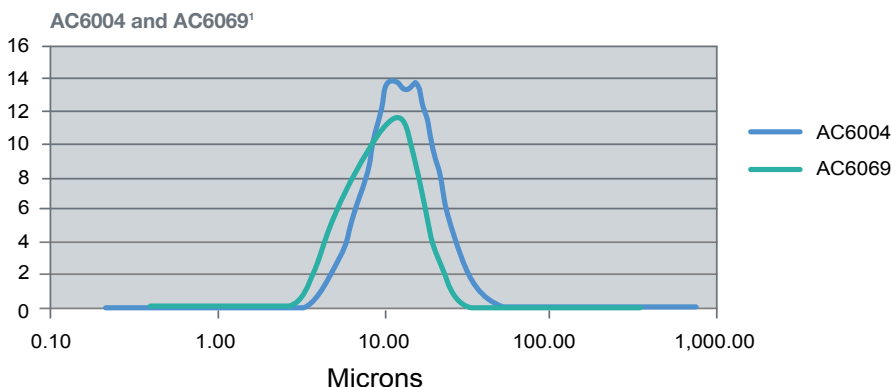
### AC6004

AC6004 has a low coefficient of friction, making it an outstanding lubricant. It possesses a slightly larger particle size (12-13 µm), a lower surface area, and a tighter particle size distribution than HCP.

### AC6069

AC6069 is commonly used as a release agent and lubricant for high-temperature glass making and metal forming processes. Additionally, its small size and good dispersion properties make it a good nucleation additive to consider for plastics foaming or solidification.

Typical Trace Element Content <sup>1</sup> (ppm, per element)	
Ca, Si	<500
Cu, Al, Mg, Fe, K	<100
Cl, S	<50
Na	<20
Other Metals	<10



<sup>1</sup> Typical data are average and actual results may vary. Typical data shall not be used as product specifications.

## Customer Service Centers

### North America

cs-na.ceramics@momentive.com

T +1 440 878 5700  
F +1 440 878 5928

### Europe

cs-eur.ceramics@momentive.com

T +49 4152 9380  
F +49 4152 938 136

### Pacific

cs-asia.ceramics@momentive.com

T +81 3 5114 3769  
F +81 3 5114 3777

**PATENT STATUS:** Nothing contained herein shall be construed to imply the nonexistence of any relevant patents or to constitute the permission, inducement or recommendation to practice any invention covered by any patent, without authority from the owner of the patent.

**PRODUCT SAFETY, HANDLING AND STORAGE:** Customers considering the use of this product should review the latest Material Safety Data Sheet and label for product safety information, handling instructions, personal protective equipment if necessary, and any special storage conditions required. Material Safety Data Sheets are available at [www.momentive.com](http://www.momentive.com) or, upon request, from any Momentive Performance Materials representative. Use of other materials in conjunction with Momentive Performance Materials products (for example, primers) may require additional precautions. Please review and follow the safety information provided by the manufacturer of such other materials.

**LIMITATIONS:** Customers must evaluate Momentive Performance Materials products and make their own determination as to fitness of use in their particular applications.=

#### EMERGENCY SERVICE:

Momentive Performance Materials maintains an around-the-clock emergency service for its products.

LOCATION	EMERGENCY SERVICE PROVIDER	EMERGENCY CONTACT NUMBER
Mainland U.S., Puerto Rico	CHEMTREC	1.800.424.9300
Alaska, Hawaii	CHEMTREC	1.800.424.9300
Canada,	CHEMTREC	1.800.424.9300
Europe, Israel	NCEC	+44(0) 1235239670
Middle East	NCEC	+44(0) 1235239671
Asia/Pacific (except China)	NCEC	+44(0) 1235239670
China	NCEC	+86.10.5100.3039
Latin America (except Brazil)	NCEC	+44(0) 1235239670
Brazil	SOS Cotec	08000111767 or 08007071767
All other locations world wide	NCEC	+44(0) 1235239670
At sea	Radio U.S. Coast Guard in US waters NCEC in International waters	+44(0) 1235239670

For Health related calls, contact Momentive Performance Materials at +1.518.233.2500 (English only).

DO NOT WAIT. Phone if in doubt. You will be referred to a specialist for advice.

**DISCLAIMER:** THE MATERIALS, PRODUCTS AND SERVICES OF MOMENTIVE PERFORMANCE MATERIALS INC., MOMENTIVE PERFORMANCE MATERIALS USA INC., MOMENTIVE PERFORMANCE MATERIALS ASIA PACIFIC PTE. LTD., MOMENTIVE PERFORMANCE MATERIALS WORLDWIDE INC., MOMENTIVE PERFORMANCE MATERIALS GmbH, THEIR SUBSIDIARIES AND AFFILIATES DOING BUSINESS IN LOCAL JURISDICTIONS (collectively "SUPPLIERS"), ARE SOLD BY THE RESPECTIVE LEGAL ENTITY OF THE SUPPLIER SUBJECT TO SUPPLIERS' STANDARD CONDITIONS OF SALE, WHICH ARE INCLUDED IN THE APPLICABLE DISTRIBUTOR OR OTHER SALES AGREEMENT, PRINTED ON THE BACK OF ORDER ACKNOWLEDGMENTS AND INVOICES, AND AVAILABLE UPON REQUEST. ALTHOUGH ANY INFORMATION, RECOMMENDATIONS, OR ADVICE CONTAINED HEREIN IS GIVEN IN GOOD FAITH, SUPPLIERS MAKE NO WARRANTY OR GUARANTEE, EXPRESS OR IMPLIED, (i) THAT THE RESULTS DESCRIBED HEREIN WILL BE OBTAINED UNDER END-USE CONDITIONS, OR (ii) AS TO THE EFFECTIVENESS OR SAFETY OF ANY DESIGN INCORPORATING SUPPLIERS' PRODUCTS, MATERIALS, SERVICES, RECOMMENDATIONS OR ADVICE. AFOREMENTIONED EXCLUSIONS OR LIMITATION OF LIABILITY ARE NOT APPLICABLE TO THE EXTENT THAT THE END-USE CONDITIONS AND/OR INCORPORATION CONDITIONS CORRESPOND TO THE RECOMMENDED CONDITIONS OF USE AND/OR OF INCORPORATION AS DESCRIBED BY SUPPLIER IN ITS PRODUCT DATA SHEET AND/OR PRODUCT SPECIFICATIONS. EXCEPT AS PROVIDED IN SUPPLIERS' STANDARD CONDITIONS OF SALE, SUPPLIERS AND THEIR REPRESENTATIVES SHALL IN NO EVENT BE RESPONSIBLE FOR ANY LOSS RESULTING FROM ANY USE OF ITS MATERIALS, PRODUCTS OR SERVICES DESCRIBED HEREIN. Each user bears full responsibility for making its own determination as to the suitability of Suppliers' materials, services, recommendations, or advice for its own particular use. Each user must identify and perform all tests and analyses necessary to assure that its finished parts incorporating Suppliers' products, materials, or services will be safe and suitable for use under end-use conditions. Nothing in this or any other document, nor any oral recommendation or advice, shall be deemed to alter, vary, supersede, or waive any provision of Suppliers' Standard Conditions of Sale or this Disclaimer, unless any such modification is specifically agreed to in a writing signed by Suppliers. No statement contained herein concerning a possible or suggested use of any material, product, service or design is intended, or should be construed, to grant any license under any patent or other intellectual property right of Suppliers or any of its subsidiaries or affiliates covering such use or design, or as a recommendation for the use of such material, product, service or design in the infringement of any patent or other intellectual property right.

Momentive and the Momentive logo are trademarks of Momentive Performance Materials Inc.



22557 Lunn Road  
Strongsville, OH 44149

T +1 440 878 5700  
F +1 440 878 5928  
[momentive.com](http://momentive.com)