

2023

ESG Summary Data

Welcome to Momentive's 2023 ESG Summary Report. This comprehensive overview showcases our progress across key Environmental, Social, and Governance metrics. We're committed to creating lasting value for stakeholders while minimizing our environmental impact, championing workplace diversity and inclusion, and upholding robust governance practices. Join us on our sustainability journey.

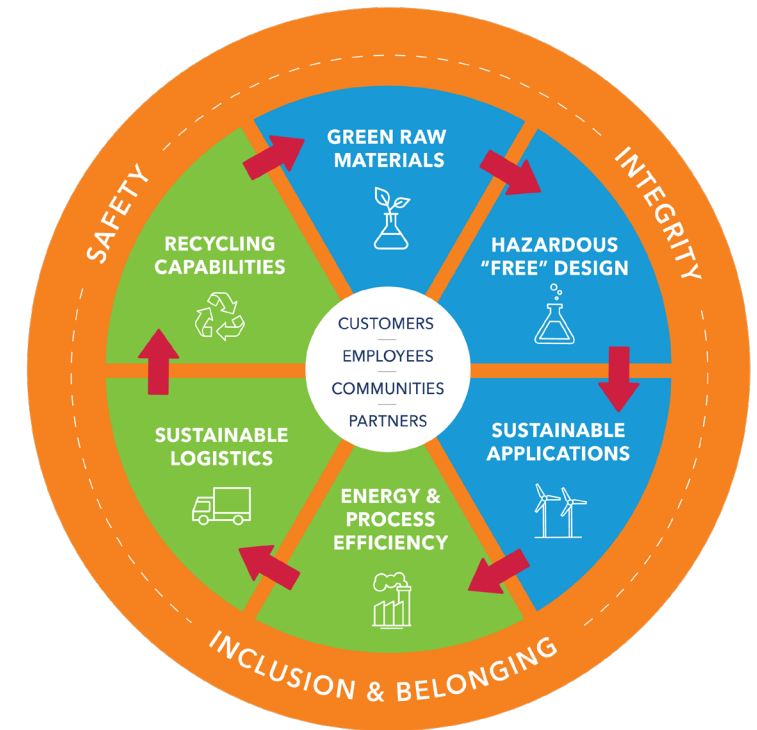
Our Sustainability Framework

Solutions for a Sustainable World™ is more than just our tagline; it embodies Momentive's mission and commitment. Our newly unveiled Sustainability Framework, as depicted in the Sustainability Framework wheel, integrates this mission into every aspect of our organization, fostering a culture where sustainability is embraced company-wide.

Our Sustainability Framework is based on three pillars (people, products, and the planet) and outlines "How" we are embedding sustainability in everything we do:

- We strive to create a workplace that values safety, inclusion, and integrity.
- We focus on procuring green raw materials, designing products without hazardous materials, and driving sustainability actions with our customers.
- We aim to reduce our footprint through efficient operations, sustainable logistics, and recycling initiatives.

This framework aligns with our strategy, purpose, and tangible initiatives, that are aligned with our stakeholder expectations. We are weaving sustainability into every aspect of our business, from safety and integrity in people to green procurement and carbon footprint reduction in products, to defining our targets and implementing sustainable logistics in the planet pillar. We are also committed to using this framework for internal and external communication and integrating it into our governance and customer interactions to promote our purpose of providing sustainable solutions.



PEOPLE
Empowering an inclusive and diverse workforce and caring for our communities

PRODUCTS
Innovating products that solve sustainability challenges for our customers and society

PLANET
Reducing our impact through operational excellence in our sites and supply chain

SUPPORTING DOCUMENTS, POLICIES AND STATEMENTS

TOPIC	METRIC				
Documents, Policies and Statements		2020-2021 Sustainability Report	2022 Sustainability Report	2022 ESG Report	Sustainability Report Archive
		Employee Code of Conduct	Human Trafficking Statement	2023 ESG Assurance Letter	ESG Commitment
		Supplier Code of Conduct	CDP Responses	2023 UNGC COP	Momentive's ESG Policy and Expectations (p11-12)
		Safety and Sustainability Policy	Global Environmental, Health, and Safety Policy		

GENERAL

TOPIC	METRIC	2019	2020	2021	2022	2023
Company	Total Employees	5,292	5,136	5,016	5,074	5,016
	Net Sales (millions)	2,300	2,300	2,680	2,900	2,300
	Number of Manufacturing Sites	17	17	15	15	17

OUR PLANET

TOPIC	METRIC	2019	2020	2021	2022	2023
ENVIRONMENTAL						
General Environment	ISO 14001 Certified Sites - #(%)	50%	50%	50%	60%	60%
Emissions and Climate Change	Scope 1 (Direct CO ₂) GHG Emissions (metric tons)*	250,000	249,000	237,000	183,000	183,000
	Scope 2 (Indirect CO ₂) GHG Emissions (metric tons)*	170,000	166,000	167,000	149,000	97,000
	Scope 2 (Indirect CO ₂) Location Based GHG Emissions (tons CO ₂ e)*	—	—	—	—	133,000
	Total CO ₂ Emissions, Scope 1 & 2 (metric tons)*	415,000	415,000	404,000	331,000	280,000

*Assured by Bureau Veritas.

SCIENCE-BASED TARGETS

Momentive has made a bold commitment to reduce greenhouse gas (GHG) emissions and become net-zero by 2050 through our commitment to Science-Based Targets (SBT) which will align us with the goal of limiting global warming to 1.5 degrees Celsius above pre-industrial levels. Our initiative demonstrates our dedication to taking substantial and immediate action to address climate change. By adopting the SBT GHG emission reduction pathway, we aim to reduce Scope 1, 2 and 3 GHG emissions in line with scientific recommendations that contribute to the global efforts to combat climate change. This reflects our commitment to environmental sustainability and our vision for a greener, more resilient future.




SCIENCE
BASED
TARGETS

DRIVING AMBITIOUS CORPORATE CLIMATE ACTION

BUSINESS AMBITION FOR 1.5°C 

OUR PLANET

TOPIC	METRIC	2019	2020	2021	2022	2023
Scope 3 Emissions and Climate Change	Purchased Goods and Services (kilo tonne CO _{2e})*	NA	NA	2,101	1,942	1,555
	Fuel-and-energy related activities (not included in Scope 1 or 2) (kilo tonne CO _{2e})	NA	NA	NA	34	31
	Upstream Transportation and Distribution (kilo tonne CO _{2e})	NA	NA	NA	264	9
	Waste Generated in Operations (kilo tonne CO _{2e})	NA	NA	NA	11	21
	Scope 3 Emissions from Business Travel (kilo tonne CO _{2e})*	1.40	NA	0.60	2.80	0.50
	Environmental Goals	 <p>Reducing our impact through operational excellence in our sites and supply chain. Reducing greenhouse gas, energy & waste by 25%. Obtaining 50% of electricity from renewables. Reducing water consumption by 10%.**</p>				

*Assured by Bureau Veritas.

**2025 Sustainability goals are using 2019 as the baseline year.

OUR PLANET

TOPIC	METRIC	2019	2020	2021	2022	2023
Emissions and Climate Change	SOx Emissions (pounds), US data	2,126	2,084	2,042	1,402	925
	NOx Emissions (pounds), US data	270,000	271,600	261,200	191,308	171,846
	CDP Climate Change Score / Supplier Engagement Rating	B-	B	C	C / A-	D / B
Energy	Total Direct Energy Consumption (Scope 1) (million Gigajoules)*	4.34	4.42	4.21	3.24	3.51
	Total Indirect Energy Consumption (Scope 2) (million Gigajoules)*	1.64	1.60	1.56	1.34	0.89
	Total Energy Consumption (million Gigajoules)*	5.98	6.02	5.77	4.58	4.40
	Total Direct Energy Intensity (Scope 1) (Gigajoules / metric tons produced)	4.87	5.05	4.55	4.45	6.57

*Assured by Bureau Veritas.

OUR PLANET

TOPIC	METRIC	2019	2020	2021	2022	2023
Energy	Total Indirect Energy Intensity (Scope 2) (Gigajoules / metric tons produced)	1.84	1.83	1.73	1.84	1.67
	Total Energy Intensity (Gigajoules / metric tons produced)	6.71	6.88	6.28	5.12	8.24
Renewable Energy	Renewable Electricity (thousand Gigajoules)*	221	216	218	231	312
	Renewable Electricity Percent of Total Electricity*	17%	17%	18%	22%	35%
	Renewable Energy Goal	50% electricity from renewable sources by 2025				
Water	Water Withdrawn (thousand m ³)*	32,000	28,500	32,300	30,900	26,500
	Water Intensity (m ³ / metric ton production)	0.036	0.033	0.036	0.042	0.048

*Assured by Bureau Veritas.

OUR PLANET

TOPIC	METRIC	2019	2020	2021	2022	2023
Water	Water sourced from regions with high or extremely high baseline water stress (thousand m ³)	173	164	201	175	184
	CDP Water Score	B-	B	B-	C	B-
Waste	Waste Generated (metric tonne)*	104,000	96,000	91,500	71,500	66,800
	Waste Intensity (kg waste / kg production)	0.12	0.11	0.10	0.10	0.12
	Waste Reduction Goal	25% reduction in waste by 2025 (2019 baseline)				

*Assured by Bureau Veritas.



Termoli, Italy

State-of-the-Art Manufacturing Hub

OUR PRODUCTS

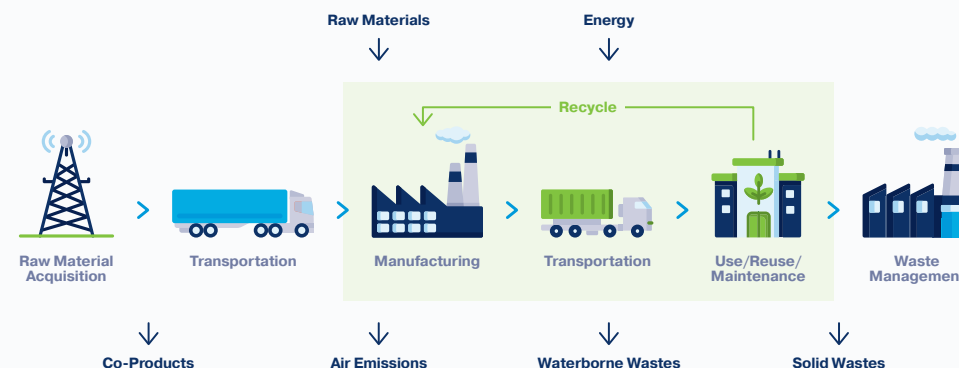
TOPIC	METRIC	2019	2020	2021	2022	2023
PRODUCTS						
Sustainable Innovation¹	R&D expenses (R&D cost to sales)	2.70%	2.90%	2.90%	2.90%	2.90%
	Sustainability improved new product sales	—	~50%	79%	79%	79%

¹Sustainable Innovation - Information provided is for Legacy Momentive and does not include Legacy KCC.

PRODUCT CARBON FOOTPRINT

At Momentive, we recognize the importance of assessing the carbon impact of our products to help mitigate the critical environmental challenge that climate change presents. We make strategic business decisions, guide research and development, and serve our customers in their efforts to reduce Scope 3 emissions by assessing Product Carbon Footprints (PCFs). We follow the principles of ISO 14067 standards and the guidelines of Together for Sustainability (TfS) for all PCF calculations. Additionally, we utilize the SIMAPRO software for the PCF modeling to obtain reliable PCF values for our products. As part of our commitment to the Science-Based Targets initiative (SBTi), creating low-carbon products is a key strategy along with other decarbonization approaches.

LCA SYSTEM BOUNDARIES



OUR PRODUCTS

TOPIC	METRIC	2019	2020	2021	2022	2023
SUPPLY CHAIN						
Supply Chain	Training rate of commodity managers on sustainable procurement	—	—	100%	100%	100%
	New contracts with targeted suppliers include references to our Supplier Code of Conduct	—	—	100%	100%	100%
	Assessment of targeted suppliers for ESG risks	—	—	30%	45%	89%

TOGETHER FOR SUSTAINABILITY

Together for Sustainability (TfS) is a partnership of chemical companies actively elevating CSR standards through improvements in their supply chain operations. Momentive joined the TfS initiative in 2023 to leverage our efforts to improve the sustainability of our supply chain. Collaboration with other TfS members helps to develop industry best practices and make the supplier evaluation process more efficient.



OUR PEOPLE

TOPIC	METRIC	2019	2020	2021	2022	2023
SOCIAL						
Workforce	Women in Workforce	18.00%	18.10%	18.50%	19.40%	19.90%
	Women in Management	16.70%	17.60%	17.90%	19.00%	19.80%

DRIVING CHANGE TOGETHER

Our people drive everything we do at Momentive, so we strive to create an environment that contributes to our people’s ability to do their best work and are committed to fostering an inclusive culture where everyone has equal opportunities for growth, development, and contribution, free from discrimination or bias.

Through attraction, development, and community outreach efforts, we continue to build a community where everyone feels they belong, embrace our differences, champion inclusion, and bolster our diversity while improving the representation of underrepresented groups, strengthening our business and contributing to a more sustainable world.



OUR PEOPLE

TOPIC	METRIC	2019	2020	2021	2022	2023
Occupational Health and Safety	Occupational Injury and Illness rate ¹	0.67	0.55	0.47	0.50	0.21
	Number of significant occupational safety incidents ²	1	0	0	0	0
	Number of fire, process safety or environmental incidents ³	16	14	8	17	12
	Accident frequency rate ⁴	0.67	0.55	0.47	0.50	0.21
	Accident severity rate ⁵	0.30	0.27	0.18	0.25	0.11
	Sites covered by employee health and safety risk assessment ⁶	100%	100%	100%	100%	100%
	ISO 45001/OHSAS 18001 certified manufacturing sites ⁷	16%	16%	16%	16%	16%

¹Safety - Standard OSHA rate definition for legacy Momentive sites worldwide. Legacy Momentive sites do not include Legacy KCC.

²Safety - Significant incidents as defined in MS15 – Incident Management Standard for legacy Momentive sites worldwide (i.e., fatality or amputation).

³Safety - Total of Major incidents as defined in MS15 – Incident Management Standard for legacy Momentive sites worldwide.

⁴Safety - Standard OSHA rate definition for legacy Momentive sites worldwide.

⁵Safety - Industry standard Day Away from Work rate for legacy Momentive sites worldwide.

⁶Safety - Legacy Momentive Manufacturing sites as defined in MS-SAF01 – Safety Risk Assessment Standard worldwide.

⁷Safety - % of Legacy Momentive Manufacturing sites certified to ISO 45001/OSHA 18001 worldwide.

OUR PEOPLE

TOPIC	METRIC	2019	2020	2021	2022	2023
Human Rights	Human Rights Policy				Employee Code of Conduct Human Trafficking Statement	

 Tlanepantla de Baz, Mexico, Mexico

PAN DE VIDA ORPHANAGE

Our Momentive Construction Sealants team in Mexico coordinated a charity project for the Pan De Vida Orphanage located in Queretaro, Mexico. The main building of the orphanage, in which most residents sleep, had suffered leaks since being built in 2001. The Momentive team helped to provide a sustainable waterproofing solution for the orphanage with the donation of Enduris™ off-color material and coordinated work at the project site, which included instruction on the application of Enduris and safety training for employees and their families.



GOVERNANCE

TOPIC	METRIC	2019	2020	2021	2022	2023
Board of Directors	Size of the Board	7	7	7	7	7
	Total Executives	11	11	11	10	9
Governance	Female Executives - #	2	2	2	2	2
	Sustainability Disclosures Independently Verified / Assured	Yes	Yes	Yes	Yes	Yes
	UN Global Compact Signatory	—	—	Yes	Yes	Yes

MOMENTIVE®

We Enable Solutions for a Sustainable World™

momentive.com